

National Programmes Day

Title of Conference: National Clinical Programmes

- Recovery, Resilience, Reform

#3RsBetterHealthNCP22

Sláintecare.

Right Care. Right Place. Right Time.



# HSE National Health and Social Care Professions Office

Clinical Programme Implementation and Professional Development

Sinéad Fitzpatrick  
Development Manager

**Sláintecare.**

Right Care. Right Place. Right Time.



## Health & Social Care Professions

- 26 Disciplines
- 18,921 people
- 25% of the clinical workforce
- 14% of the total workforce





# Health and Social Care Professions' Response During COVID-19



### HSCP Workforce Mobility and Flexibility

**Redeployment**

- Supporting the National Test and Trace End to End Model
- Supporting the development and implementation of the Community Assessment Hubs
- Providing essential care in acute wards, nursing and residential homes
- Rapid upskilling and delivery of vital care in ICU

**Redesign of HSCP work patterns and practices to enable service delivery**

- Restructuring to split teams, extended working hours and varied working week patterns
- Developing responsive communication systems
- Rapid change in practices by medical scientists to support demand for SARS – CoV-2 testing
- Expanding mobile radiography services
- Dynamic risk assessment and management to prioritise and address needs of people with disabilities

### HSCP Support COVID-19 and Non-COVID-19 Services

**Professional Bodies**

- Developing and providing access to training programmes, guidance documents for staff and resources for service users
- Collaborating with HR supporting workforce supply

**HEI**

- Modifying student practice placements
- Delivering online classes, tutorials and simulation training
- Accelerating graduation process (in some cases) to facilitate workforce supply
- HSCP involvement in planning and delivery of psychosocial support services for both public and HSE staff

### HSCP Service Innovation

Examples include:

- Implementing a range of digital solutions
  - Introducing telehealth as part of a blended model of service delivery
  - Home based Virtual Pulmonary Rehabilitation Programme for COPD patients by OLUL in collaboration with European funded interim project #iPower
- Rapid formulation and validation of a reagent in short supply to meet demand for SARS-CoV-2 testing, a rapid collective effort by medical laboratory scientists (CUH, UCC & UL), academic researchers (CIT) and the biopharma industry (Collaboration between HSE, HEI, State Agency and Industry)

### HSCP Office Strategic Leadership

- Representing HSCP in key national fora including COVID-19 service continuity and workforce planning groups
- Developing platforms, including the HSCP Repository and HSCP Share Blog, to support timely sharing of information amongst the HSCP community
- Engaging with key HSCP network groups to inform national strategic planning
- Proactively engaging with key stakeholders to address issues as they arise and seeking to find solutions e.g. challenges with regard to student practice placements



# HSCP Deliver



A Strategic Guidance Framework  
for Health & Social Care Professions  
2021-2026



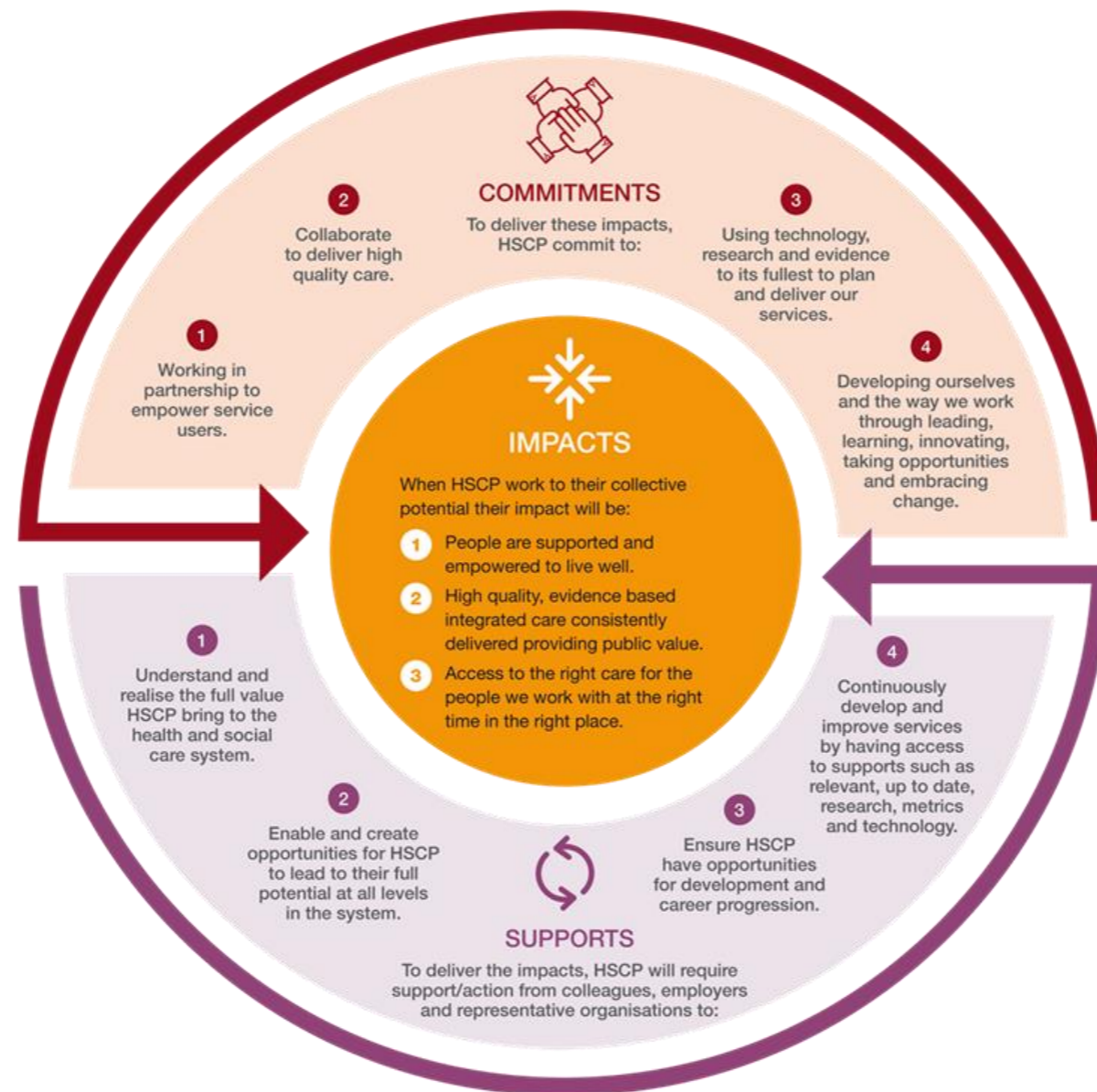
Seirbhís Sláinte  
Níos Fearr  
& Forbairt | Building a  
Better Health  
Service

A framework for  
achieving our  
collective potential



Seirbhís Sláinte  
Níos Fearr  
á Forbairt

Building a  
Better Health  
Service





# Delivering on our commitments

Promote and champion advanced practice

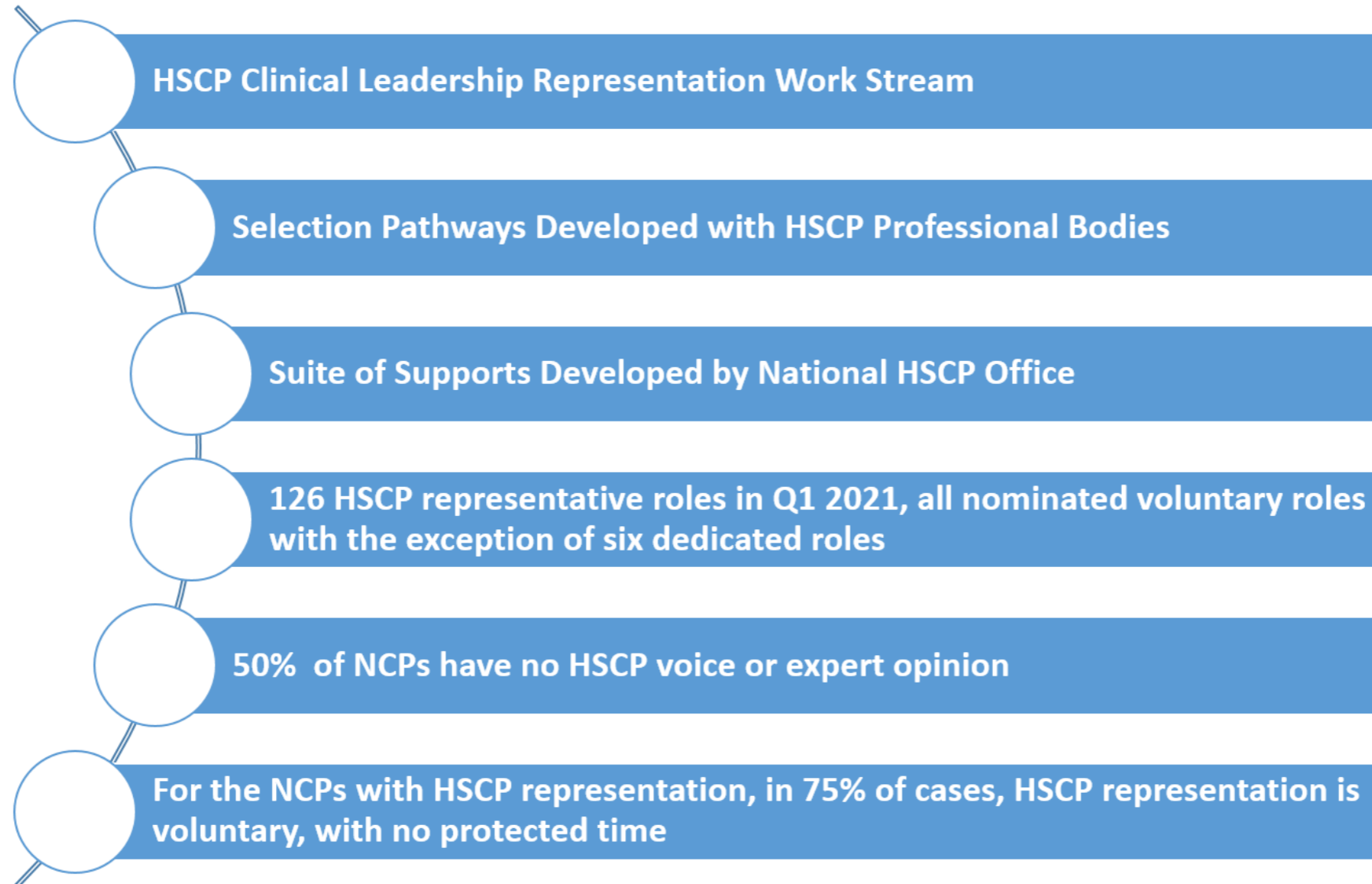
Ensure expert HSCP advisory input

Address supply, capacity and sustainability workforce issues

Links with HEIs – practice placement

Action plan re HSCP leadership

# HSCP Clinical Leadership Representation





Email  
HSCP.NationalOffice@hse.ie

Home

Professional  
Development

Leadership &  
Innovation

Education &  
Research

Clinical  
Representation

Digital Health

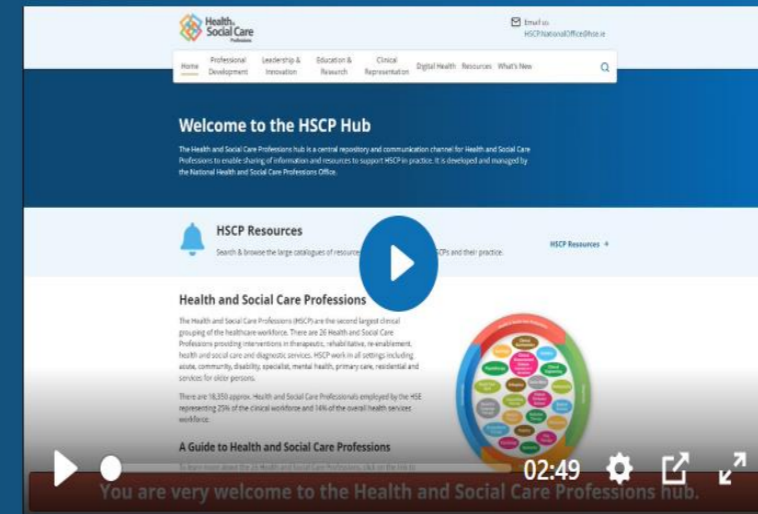
Resources

What's New



# Welcome to the HSCP Hub

The Health and Social Care Professions hub is a central repository and communication channel for Health and Social Care Professions to enable sharing of information and resources to support HSCP in practice. It is developed and managed by the National Health and Social Care Professions Office.

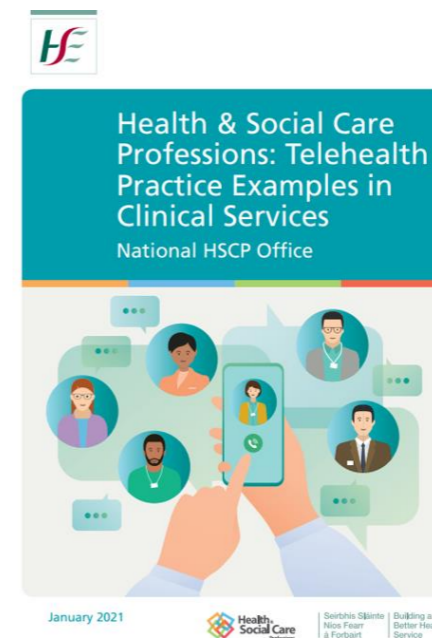
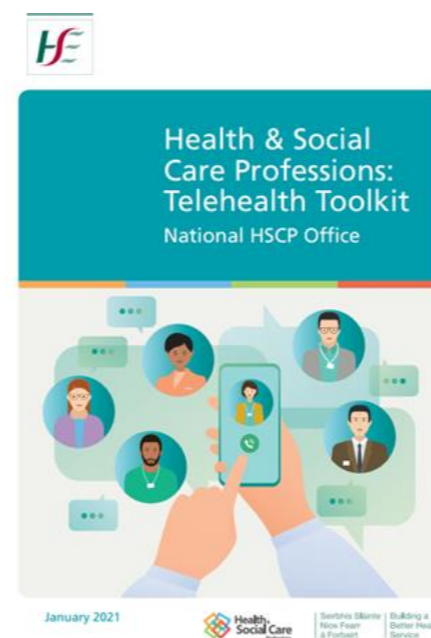


# • HSCP Hub

- Resources
- What's new
- Leadership webinars
- Leadership - CLCF
- Telehealth toolkit and
- Telehealth Examples
- Reflective practice
- Supervision

## Introduction

One of the key priorities for the National HSCP office is to support development of leadership capacity among health and social care professionals. It is our consideration that leadership skill is an attribute each HSCP has to possess to drive changes and deliver patient centred services. The office continues to collaborate with relevant stakeholders to design and deliver leadership activities specific to different HSCP cohorts. These activities are planned based on our engagement with HSCPs through research study, survey and workshop feedback etc. In this section, you will find information on these various activities with access to necessary documents or videos.



## In this section

### Leadership & Innovation

Clinical Leadership Competency Framework (CLCF)

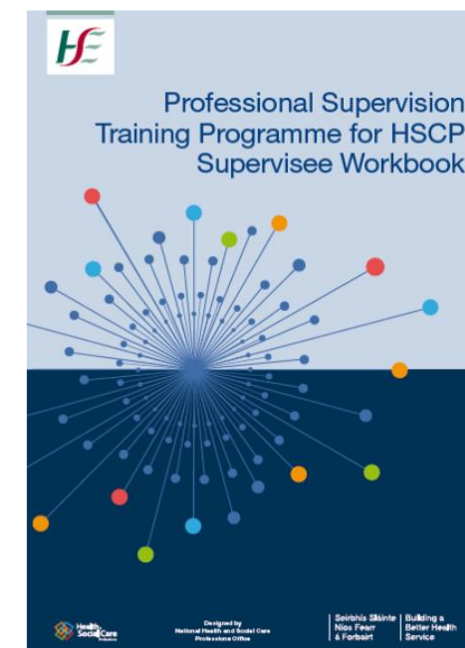
HSCP Leadership Study 2019

HSCP Leadership Survey 2020

HSCP Leadership Webinar Series 2021

HSCP Leadership Workshops 2021-2022

Best Practice & Innovation Awards





Innovation Programme

- National programme to **encourage, support and recognise innovation among frontline healthcare workers** in Ireland with the **goal of encouraging innovation across our health service**
- **Dermot Burke HSCP Fellow supported by the National HSCP Office**
- Record number of HSCP applicants for Spark Seed, Spark Ignite and the Community Innovation Fund
- Orthopaedic boot camp
- Artificial Intelligence and Machine Learning in Healthcare Forum at the end of November. Link for expression of interest to the AI/ML event [https://hse-  
ie.libwizard.com/id/943c0e03b84893ced42091c6632659e0](https://hse.ie.libwizard.com/id/943c0e03b84893ced42091c6632659e0)

- **Connect with the National HSCP Office**
- HSCP webpage on HSE.ie
- HSCP hub on HSELand.ie
- email address [HSCP.NationalOffice@hse.ie](mailto:HSCP.NationalOffice@hse.ie)
- Twitter @WeHSCPs